

Series 2500 Flanged Safety Relief Valves

- Manufactured in accordance with ASME Code Section VIII
- NBBI capacity certified for air/gas, liquid & steam
- Meets API 526 & 527
- Excellent flow capacities
- NACE, bellows and severe service options



Product Nomenclature

B	25	M	15	F	20	A
BELLOWS	SERIES	SEAT TYPE	INLET SIZE	ORIFICE	OUTLET	INLET
USED ON BELLOWS OPTION ONLY	2500 SAFETY RELIEF VALVE	M - Metal C - Neoprene E - EPDM K - Kalrez® N - Nitrile S - Silicone V - Fluorocarbon	15 - 1.5" 20 - 2.0" 25 - 2.5"	F - 0.307 G - 0.503 H - 0.785 J - 1.287	20 - 2.0" 25 - 2.5" 30 - 3.0" 40 - 4.0"	A - 150 B - 300 Light Pattern C - 300 D - 600

15F20

INLET • ORIFICE • OUTLET

VALVE MODEL	API ORIFICE AREA [SQ IN]	INLET SIZE	OUTLET SIZE	INLET X OUTLET FLANGE PRESSURE CLASS	SET PRESSURE LIMITS [TEMPERATURE DEPENDENT]			DIMENSIONS CENTER TO FACE			WEIGHT LBS.
					100°F	450°F	800°F	A	B	C	
15F20	0.307	1.5"	2"	150 X 150	285	185	80	4-7/8"	4-3/4"	19-1/2"	45
15F20	0.307	1.5"	2"	300 X 150	285	285	285	4-7/8"	4-3/4"	19-1/2"	45
15F20	0.307	1.5"	2"	300 X 150	740	615	410	4-7/8"	6"	22"	50
15F20	0.307	1.5"	2"	600 X 150	1480	1235	825	4-7/8"	6"	22"	57
15G25	0.503	1.5"	2.5"	150 X 150	285	185	80	4-7/8"	4-3/4"	19-1/2"	55
15G25	0.503	1.5"	2.5"	300 X 150	285	285	285	4-7/8"	4-3/4"	19-1/2"	55
15G25	0.503	1.5"	2.5"	300 X 150	740	615	410	4-7/8"	6"	22"	60
15G25	0.503	1.5"	2.5"	600 X 150	1480	1235	825	4-7/8"	6"	22"	65
15H30	0.785	1.5"	3"	150 X 150	285	185	80	5-1/8"	4-7/8"	21-3/4"	60
15H30	0.785	1.5"	3"	300 X 150	285	285	285	5-1/8"	4-7/8"	21-3/4"	60
20H30	0.785	2"	3"	300 X 150	740	615	410	5-1/8"	4-7/8"	25-1/8"	65
20H30	0.785	2"	3"	600 X 150	1480	1235	825	6-1/16"	6-3/8"	25-1/8"	85
20J30	1.287	2"	3"	150 X 150	285	185	80	5-3/8"	4-7/8"	22-1/2"	75
20J30	1.287	2"	3"	300 X 150	285	285	285	5-3/8"	4-7/8"	22-1/2"	80
25J40	1.287	2.5"	4"	600 X 150	1480	1235	825	6-1/8"	6-3/4"	25-1/8"	105

MAX BACK PRESSURE AT 100°F: CONVENTIONAL VALVE: 285 psig
BELLOWS VALVE: 230 psig

CANADIAN REGISTRATION NUMBER 0G0736.2C
(Applies to ASME Code stamped valves only.)



1
FLANGE FACING

- 1 - RF X RF
- 2 - RTJ X RF
- 3 - SPECIAL

C1
BILLS OF MATERIAL

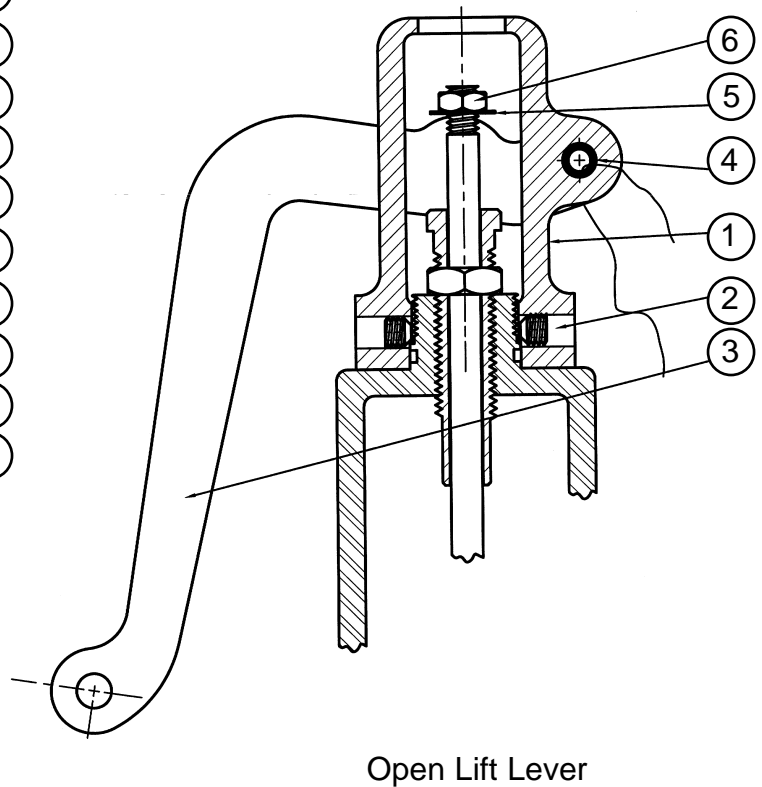
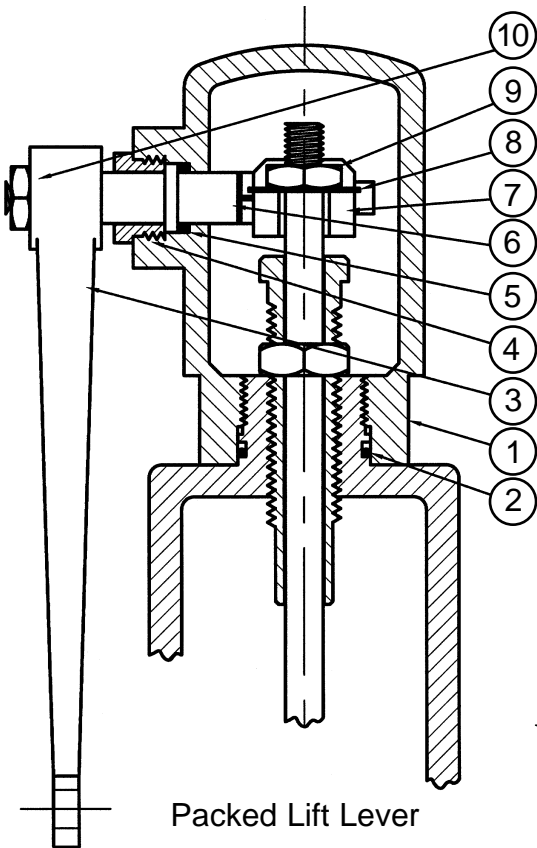
MODEL	BODY	SPRING	TEMP. RANGE
C1	Carbon Steel	Carbon Steel or Alloy Steel	-20 TO 450°F
C2	Carbon Steel	316 Stainless Steel	-20 TO 450°F
C3	Carbon Steel	Inconel® X750	-20 TO 800°F
C4	Carbon Steel [NACE MRO 175]	Inconel® X750	-20 TO 800°F
S1	CF8M	Stainless Steel	-400 TO 450°F
S2	CF8M	316 Stainless	-400 TO 450°F
S3	CF8M	Inconel® X750	-400 TO 800°F
M1	Carbon Steel	Carbon Steel	-20 TO 450°F
M2	CF8M	Stainless Steel	-400 TO 450°F
H1	Carbon Steel	Carbon Steel	-20 TO 450°F
H2	CF8M	Stainless Steel	-400 TO 450°F
X1	SPECIFY	SPECIFY	SPECIFY

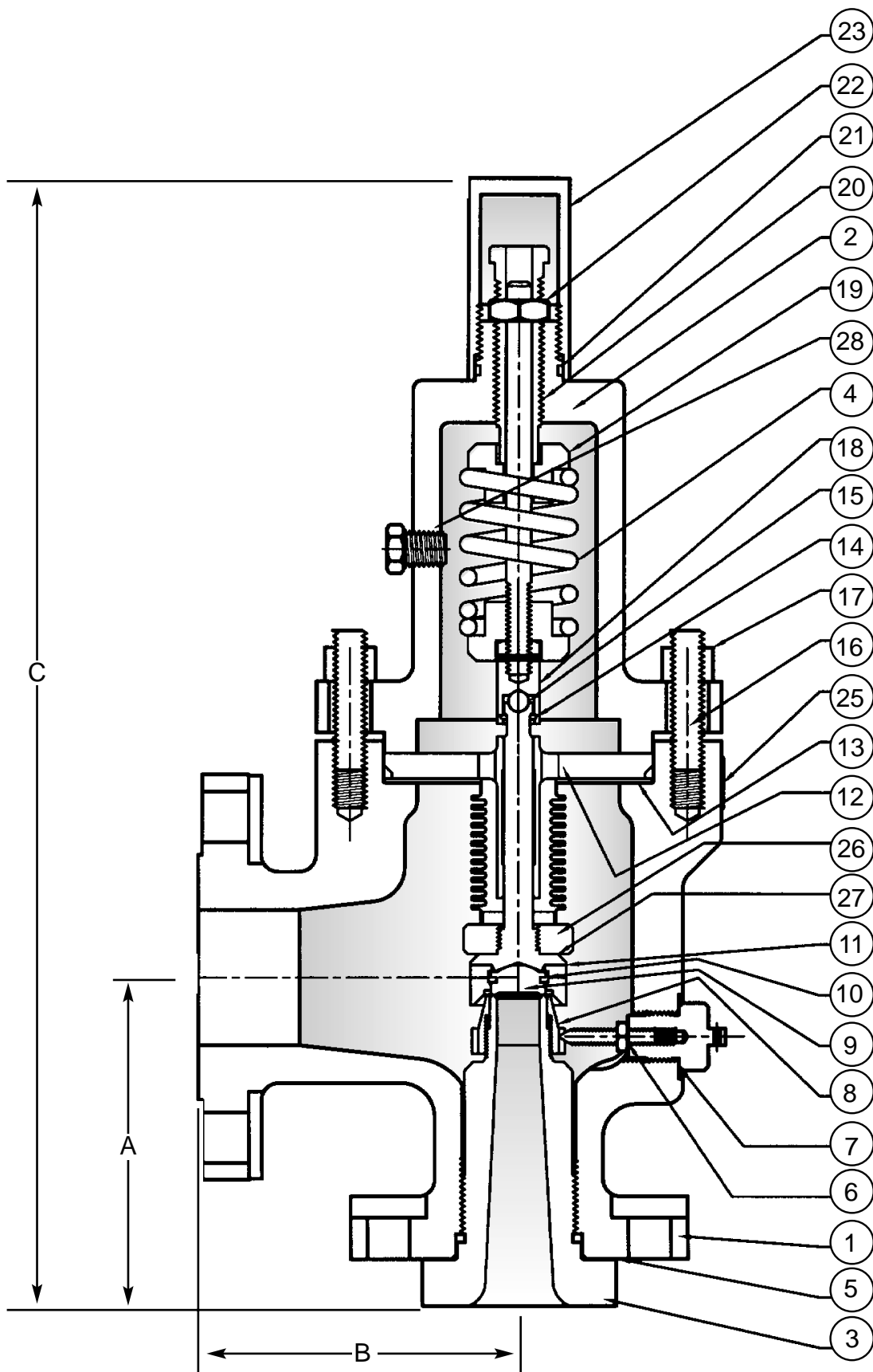
A
SERVICE CODE

- A - ASME SEC. VIII Air/Gas
- B - ASME SEC. VIII Steam
- C - ASME SEC. VIII Liquid
- F - Non Code Air/Gas
- G - Non Code Steam
- H - Non Code Liquid
- J - Special

O
CAPTTYPE

- 0 - Closed Cap
 - L - Open Lift Lever
 - P - Packed Lift Lever
- ASME Code requires lift lever on water service over 140° F, or on air or steam





BELLOWS MODEL

BILLS OF MATERIAL

ITEM	QTY	PARTNAME	C1	C2	C3	C4	S1	S2	S3	M1	M2	H1	H2
1	1	BODY	ASME SA216 GR WCB/WCC	SAME AS C1	SAME AS C1	SAME AS C1	ASME SA351 GR CF8M	SAME AS S1	SAME AS S1	SAME AS C1	SAME AS S1	SAME AS C1	SAME AS S1
2	1	BONNET	ASME SA216 GR WCB/WCC	C1	C1	C1	ASME SA351 GR CF8M	S1	S1	C1	S1	C1	S1
3	1	NOZZLE	ASME SA479 316 OR SA351 CF8M	C1	C1	C1	ASME SA479 316 OR SA351 CF8M	S1	S1	MONEL®	MONEL®	HASTELLOY® C	HASTELLOY® C
4	1	SPRING	CARBON OR ALLOY STEEL	A313-92-T316*	INCONEL® X750	INCONEL® X750	STAINLESS STEEL	ASTM A313-92-T316	INCONEL® X750	C1	S1	C1	S1
5	1	NOZZLE BODY GASKET	SOFT IRON	ASME SA240 316	C1	C1	ASME SA240 316	S1	S1	C1	S1	C1	S1
6	1	LOCKPIN	ASME SA479	A479 316	C1	C1	ASME SA479	S1	S1	C1	S1	C1	S1
7	1	LOCK PIN GASKET	SOFT IRON	ASME SA240 316	C1	C1	ASME SA240 316	S1	S1	C1	S1	C1	S1
8	1	WARN RING	ASME SA479 316 OR SA351 CF8M	C1	C1	C1	ASME SA479 316 OR SA351 CF8M	S1	S1	C1	S1	C1	S1
9	1	DISK	ASME SA479 316 OR SA351 CF8M	C1	C1	C1	ASME SA479 316 OR SA351 CF8M	S1	S1	MONEL®	MONEL®	HASTELLOY® C	HASTELLOY® C
10	1	DISK RETAINING RING	ASTM A313-92-T302	INCONEL® X750	INCONEL® X750	INCONEL® X750	ASTM A313-92-T302	S1	INCONEL® X750	C1	S1	C1	S1
11	1	DISK HOLDER	ASME SA479 316 OR SA351 CF8M	C1	C1	C1	ASME SA479 316 OR SA351 CF8M	S1	INCONEL® X750	C1	S1	C1	S1
12	1	GUIDE	ASME SA664 GR 17-4PH	A479 316	C1	C1	ASME SA664 T630 GR 17-4PH	S1	S1	C1	S1	C1	S1
13	2	GUIDE GASKET	SOFT IRON	ASME SA240 316	C1	C1	ASME SA240 316	S1	S1	C1	S1	C1	S1
14	1	STEM JOINT RETAINER	ASTM A313-92-T302	INCONEL® X750	INCONEL® X750	INCONEL® X750	ASTM A313-92-T302	S1	INCONEL® X750	C1	S1	C1	S1
15	1	STEM JOINT BALL	A493 GR 302	C1	C1	COBALT	A493 GR 302	S1	S1	C1	S1	C1	S1
16	4-8	BONNET STUDS	ASME SA193 GR B7	C1	C1	320 L7M OR GR8	ASME SA193 GR B8	S1	S1	C1	S1	C1	S1
17	4-8	BONNET STUD NUTS	ASME SA194 GR 2H	C1	C1	C1	ASME SA 194 GR 8	S1	S1	C1	S1	C1	S1
18	1	STEM ASSEMBLY	ASME SA479	A479 316	C1	C1	ASME SA479	S1	S1	C1	S1	C1	S1
19	2	SPRING STUDS	ASME SA479	A479 316	C1	C1	ASME SA479	S1	S1	C1	S1	C1	S1
20	1	ADJUSTING SCREW	ASME SA479	A479 316	C1	C1	ASME SA479	S1	S1	C1	S1	C1	S1
21	1	CAP GASKET	SOFT IRON	ASME SA240 316	C1	C1	ASME SA240 316	S1	S1	C1	S1	C1	S1
22	1	LOCKNUT	ASME SA479	A479 316	C1	C1	ASME SA479	S1	S1	C1	S1	C1	S1
23	1	CAP	ASTM A108	C1	C1	C1	ASME SA479	S1	S1	C1	S1	C1	S1
24	1	DRAIN PLUG	ASME SA105	C1	C1	C1	ASME SA182 F316	S1	S1	C1	S1	C1	S1
25	1	NAME PLATE	STAINLESS STEEL	C1	C1	C1	STAINLESS STEEL	S1	S1	C1	S1	C1	S1

SOFT SEAT VALVES

ITEM	QTY	PARTNAME	APPLICATION DEPENDENT	APPLICATION DEPENDENT	APPLICATION DEPENDENT	APPLICATION DEPENDENT	APPLICATION DEPENDENT	APPLICATION DEPENDENT	APPLICATION DEPENDENT	APPLICATION DEPENDENT	APPLICATION DEPENDENT	APPLICATION DEPENDENT	APPLICATION DEPENDENT
9A	1	DISK ASSEMBLY	ASME SA479 316	ASME SA479 316	ASME SA479 316	ASME SA479 316	ASME SA479 316	ASME SA479 316	ASME SA479 316	ASME SA479 316	ASME SA479 316	ASME SA479 316	ASME SA479 316
9B	1	SEAT O-RING	SEE SEAT MATERIAL TYPES	SEE SEAT MATERIAL TYPES	SEE SEAT MATERIAL TYPES	SEE SEAT MATERIAL TYPES	SEE SEAT MATERIAL TYPES	SEE SEAT MATERIAL TYPES	SEE SEAT MATERIAL TYPES	SEE SEAT MATERIAL TYPES	SEE SEAT MATERIAL TYPES	SEE SEAT MATERIAL TYPES	SEE SEAT MATERIAL TYPES

BELLOWS VALVES

26	1	BELLOWS ASSEMBLY	ASME SA479 316L	SAME AS C1	SAME AS C1	SAME AS C1	ASME SA479 316L	SAME AS S1	SAME AS S1	SAME AS C1	SAME AS S1	SAME AS C1	SAME AS S1
27	1	DISK HOLDER GASKET	SOFT IRON	ASME SA240 316	C1	C1	ASME SA240 316	S1	S1	C1	S1	C1	S1
28	1	BONNET/VENT PLUG	ASME SA105	C1	C1	C1	ASME SA182 F316	S1	S1	C1	S1	C1	S1

OPEN LIFT LEVER ASSEMBLY

1	1	CAP	CARBON STEEL	SAME AS C1	SAME AS C1	SAME AS C1	STAINLESS STEEL	SAME AS S1	SAME AS S1	SAME AS C1	SAME AS S1	SAME AS C1	SAME AS S1
2	1	CAP SCREW	CARBON STEEL	C1	C1	C1	STAINLESS STEEL	S1	S1	C1	S1	C1	S1
3	1	LIFT LEVER	ASME SA216 GR WCB	C1	C1	C1	ASME SA351 GR CF8M	S1	S1	C1	S1	C1	S1
4	1	PIN	STEEL	C1	C1	C1	STAINLESS STEEL	S1	S1	C1	S1	C1	S1
5	1	WASHER	PLATED CARBON STEEL	C1	C1	C1	STAINLESS STEEL	S1	S1	C1	S1	C1	S1
6	1	NUT	PLATED CARBON STEEL	C1	C1	C1	STAINLESS STEEL	S1	S1	C1	S1	C1	S1

PACKED LIFT LEVER ASSEMBLY

1	1	CAP	CARBON STEEL	SAME AS C1	SAME AS C1	SAME AS C1	STAINLESS STEEL	SAME AS S1	SAME AS S1	SAME AS C1	SAME AS S1	SAME AS C1	SAME AS S1
2	1	CAP SEAL	ELASTOMER	C1	C1	C1	ELASTOMER OR GRAPHITE	S1	S1	C1	S1	C1	S1
3	1	LIFT HANDLE	ASME SA351 GR CF8M	C1	C1	C1	ASME SA351 GR CF8M	S1	S1	C1	S1	C1	S1
4	1	PACKING NUT	ASME SA479	C1	C1	C1	ASME SA479	S1	S1	C1	S1	C1	S1
5	1	PACKING	ELASTOMER OR GRAPHITE	C1	C1	C1	ELASTOMER OR GRAPHITE	S1	S1	C1	S1	C1	S1
6	1	SHAFT	ASME SA743 GR CF8M	C1	C1	C1	ASME SA743 GR CF8M	S1	S1	C1	S1	C1	S1
7	1	LIFT DOG	ASME SA743 GR CF8M	C1	C1	C1	ASME SA743 GR CF8M	S1	S1	C1	S1	C1	S1
8	1	WASHER	STAINLESS STEEL	C1	C1	C1	STAINLESS STEEL	S1	S1	C1	S1	C1	S1
9	1	NUT	STAINLESS STEEL	C1	C1	C1	STAINLESS STEEL	S1	S1	C1	S1	C1	S1
10	1	NUT	STAINLESS STEEL	C1	C1	C1	STAINLESS STEEL	S1	S1	C1	S1	C1	S1

* CONSULT FACTORY FOR MAX SET PRESSURE

Viton® and Kalrez® are registered trademarks of the DuPont Dow Elastomers, LLC.
 Teflon® is a registered trademark of I. E. DuPont De Nemours Company.
 Stellite® is a registered trademark of the DuPont Stellite Company, Inc.
 Inconel® and Monel® are registered trademarks of the International Nickel Company, Inc.

Series 2500 Air Capacities

AIR CAPACITIES IN SCFM AT 10% OVERPRESSURE [ASME SEC VIII]

API ORIFICE AREA [SQ. IN.]	F 0.307	G 0.503	H 0.785	J 1.287	API ORIFICE AREA [SQ. IN.]	F 0.307	G 0.503	H 0.785	J 1.287
SET PRESSURE PSIG					SET PRESSURE PSIG				
15	167	299	479	767	490	2822	5057	8119	12984
20	192	344	553	884	500	2878	5157	8280	13242
25	218	390	626	1001	510	2934	5258	8441	13500
30	243	436	699	1119	520	2990	5358	8602	13758
35	271	486	780	1247	530	3047	5459	8764	14015
40	299	536	861	1376	540	3103	5559	8925	14273
45	327	586	941	1505	550	3159	5660	9086	14531
50	355	637	1022	1634	560	3215	5760	9248	14789
55	383	687	1103	1763	570	3271	5861	9409	15047
60	411	737	1183	1892	580	3327	5961	9570	15305
65	439	787	1264	2021	590	3383	6062	9731	15563
70	467	837	1345	2150	600	3439	6162	9893	15821
75	495	888	1425	2279	610	3495	6262	10054	16079
80	523	938	1506	2408	620	3551	6363	10215	16337
85	551	988	1586	2537	630	3607	6463	10377	16595
90	580	1038	1667	2666	640	3663	6564	10538	16853
95	608	1089	1748	2795	650	3719	6664	10699	17111
100	636	1139	1828	2924	660	3775	6765	10860	17369
110	692	1239	1990	3182	670	3831	6865	11022	17627
115	720	1290	2070	3311	680	3888	6966	11183	17885
120	748	1340	2151	3440	690	3944	7066	11344	18143
125	776	1390	2232	3569	700	4000	7167	11506	18400
130	804	1440	2312	3698	720	4112	7368	11828	18916
135	832	1490	2393	3827	740	4224	7568	12151	19432
140	860	1541	2474	3956	760	4336	7769	12473	19948
150	916	1641	2635	4214	780	4448	7970	12796	20464
160	972	1742	2796	4472	800	4560	8171	13118	20980
170	1028	1842	2957	4730	820	4672	8372	13441	21496
180	1084	1943	3119	4988	840	4785	8573	13763	22012
190	1140	2043	3280	5246	860	4897	8774	14086	22527
200	1196	2143	3441	5503	880	5009	8975	14409	23043
210	1252	2244	3603	5761	900	5121	9176	14731	23559
220	1308	2344	3764	6019	920	5233	9377	15054	24075
230	1364	2445	3925	6277	940	5345	9578	15376	24591
240	1421	2545	4086	6535	960	5457	9779	15699	25107
250	1477	2646	4248	6793	980	5570	9980	16021	25623
260	1533	2746	4409	7051	1000	5682	10180	16344	26139
270	1589	2847	4570	7309	1020	5794	10381	16667	26655
275	1617	2897	4651	7438	1040	5906	10582	16989	27170
280	1645	2947	4732	7567	1060	6018	10783	17312	27686
285	1673	2997	4812	7696	1080	6130	10984	17634	28202
290	1701	3048	4893	7825	1100	6242	11185	17957	28718
300	1757	3148	5054	8083	1120	6354	11386	18279	29234
310	1813	3249	5215	8341	1140	6467	11587	18602	29750
320	1869	3349	5377	8599	1160	6579	11788	18925	30266
330	1925	3449	5538	8857	1180	6691	11989	19247	30782
340	1981	3550	5699	9115	1200	6803	12190	19570	31297
350	2037	3650	5861	9373	1220	6915	12391	19892	31813
360	2093	3751	6022	9631	1240	7027	12592	20215	32329
370	2149	3851	6183	9888	1260	7139	12792	20537	32845
380	2205	3952	6344	10146	1280	7252	12993	20860	33361
390	2262	4052	6506	10404	1300	7364	13194	21183	33877
400	2318	4153	6667	10662	1320	7476	13395	21505	34393
410	2374	4253	6828	10920	1340	7588	13596	21828	34909
420	2430	4354	6990	11178	1360	7700	13797	22150	35424
430	2486	4454	7151	11436	1380	7812	13998	22473	35940
440	2542	4555	7312	11694	1400	7924	14199	22795	36456
450	2598	4655	7473	11952	1420	8037	14400	23118	36972
460	2654	4755	7635	12210	1440	8149	14601	23441	37488
470	2710	4856	7796	12468	1460	8261	14802	23763	38004
480	2766	4956	7957	12726	1480	8373	15003	24086	38520

Series 2500 Water Capacities



WATER CAPACITIES IN GPM AT 10% OVERPRESSURE [ASME SEC VIII]

API ORIFICE AREA [SQ. IN.]	F	G	H	J	API ORIFICE AREA [SQ. IN.]	F	G	H	J
	0.307	0.503	0.785	1.287		0.307	0.503	0.785	1.287
SET PRESSURE PSIG					SET PRESSURE PSIG				
15	34	62	99	158	490	188	337	541	865
20	39	70	112	179	500	190	340	547	874
25	43	77	123	197	510	192	344	552	883
30	47	83	134	214	520	194	347	557	891
35	50	90	145	231	530	196	351	563	900
40	54	96	155	247	540	197	354	568	908
45	57	102	164	262	550	199	357	573	917
50	60	108	173	276	560	201	360	578	925
55	63	113	181	290	570	203	363	584	933
60	66	118	189	303	580	205	367	589	941
65	69	123	197	315	590	206	370	594	949
70	71	127	205	327	600	208	373	599	958
75	74	132	212	339	610	210	376	604	965
80	76	136	219	350	620	212	379	609	973
85	78	140	225	360	630	213	382	614	981
90	81	144	232	371	640	215	385	618	989
95	83	148	238	381	650	217	388	623	997
100	85	152	244	391	660	218	391	628	1004
110	89	160	256	410	670	220	394	633	1012
115	91	163	262	419	680	222	397	637	1019
120	93	167	268	428	690	223	400	642	1027
125	95	170	273	437	700	225	403	647	1034
130	97	174	279	446	720	228	409	656	1049
135	99	177	284	454	740	231	414	665	1063
140	101	180	289	463	760	234	420	674	1078
150	104	186	299	479	780	237	425	683	1092
160	107	193	309	494	800	240	431	691	1106
170	111	199	319	510	820	243	436	700	1119
180	114	204	328	524	840	246	441	708	1133
190	117	210	337	539	860	249	446	717	1146
200	120	215	346	553	880	252	452	725	1160
210	123	221	354	566	900	255	457	733	1173
220	126	226	363	580	920	258	462	741	1186
230	129	231	371	593	940	261	467	749	1198
240	132	236	379	606	960	263	472	757	1211
250	134	241	386	618	980	266	477	765	1224
260	137	245	394	630	1000	269	481	773	1236
270	140	250	402	642	1020	271	486	781	1248
275	141	252	405	648	1040	274	491	788	1261
280	142	255	409	654	1060	277	496	796	1273
285	143	257	413	660	1080	279	500	803	1285
290	145	259	416	666	1100	282	505	811	1296
300	147	264	423	677	1120	284	510	818	1308
310	150	268	430	688	1140	287	514	825	1320
320	152	272	437	699	1160	289	519	832	1331
330	154	277	444	710	1180	292	523	840	1343
340	157	281	451	721	1200	294	527	847	1354
350	159	285	457	731	1220	297	532	854	1365
360	161	289	464	742	1240	299	536	861	1377
370	163	293	470	752	1260	302	540	868	1388
380	166	297	476	762	1280	304	545	874	1399
390	168	301	483	772	1300	306	549	881	1409
400	170	304	489	782	1320	309	553	888	1420
410	172	308	495	792	1340	311	557	895	1431
420	174	312	501	801	1360	313	561	901	1442
430	176	316	507	811	1380	316	566	908	1452
440	178	319	513	820	1400	318	570	915	1463
450	180	323	519	829	1420	320	574	921	1473
460	182	327	524	838	1440	322	578	928	1483
470	184	330	530	847	1460	325	582	934	1494
480	186	334	536	856	1480	327	586	940	1504

Series 2500 Dry Saturated Steam Capacities



STEAM CAPACITIES IN POUNDS PER HOUR AT 10% OVERPRESSURE [ASME SEC VIII]

API ORIFICE AREA [SQ. IN.]	F	G	H	J	API ORIFICE AREA [SQ. IN.]	F	G	H	J
	0.307	0.503	0.785	1.287		0.307	0.503	0.785	1.287
SET PRESSURE PSIG					SET PRESSURE PSIG				
15	468	839	1347	2154	440	7141	12796	20543	32854
20	540	967	1553	2484	450	7299	13078	20996	33578
25	611	1096	1759	2813	460	7456	13360	21449	34303
30	683	1224	1965	3142	470	7614	13643	21902	35028
35	762	1365	2191	3505	480	7771	13925	22355	35752
40	841	1506	2418	3867	490	7929	14207	22809	36477
45	919	1647	2645	4229	500	8086	14489	23262	37202
50	998	1788	2871	4592	510	8244	14772	23715	37926
55	1077	1930	3098	4954	520	8401	15054	24168	38651
60	1156	2071	3324	5316	530	8559	15336	24621	39376
65	1234	2212	3551	5679	540	8717	15618	25074	40100
70	1313	2353	3777	6041	550	8874	15901	25527	40825
75	1392	2494	4004	6403	560	9032	16183	25980	41550
80	1471	2635	4231	6766	570	9189	16465	26434	42274
85	1549	2776	4457	7128	580	9347	16747	26887	42999
90	1628	2917	4684	7490	590	9504	17029	27340	43724
95	1707	3058	4910	7853	600	9662	17312	27793	44448
100	1786	3200	5137	8215	610	9819	17594	28246	45173
110	1943	3482	5590	8940	620	9977	17876	28699	45898
115	2022	3623	5816	9302	630	10134	18158	29152	46622
120	2101	3764	6043	9664	640	10292	18441	29605	47347
125	2179	3905	6270	10027	650	10449	18723	30059	48072
130	2258	4046	6496	10389	660	10607	19005	30512	48796
135	2337	4187	6723	10751	670	10764	19287	30965	49521
140	2416	4329	6949	11114	680	10922	19570	31418	50246
150	2573	4611	7402	11838	690	11079	19852	31871	50970
160	2731	4893	7855	12563	700	11237	20134	32324	51695
170	2888	5175	8309	13288	720	11552	20699	33230	53144
180	3046	5458	8762	14012	740	11867	21263	34137	54594
190	3203	5740	9215	14737	760	12182	21828	35043	56043
200	3361	6022	9668	15462	780	12497	22392	35949	57492
210	3518	6304	10121	16186	800	12812	22957	36855	58942
220	3676	6587	10574	16911	820	13127	23521	37762	60391
230	3833	6869	11027	17636	840	13442	24086	38668	61840
240	3991	7151	11480	18360	860	13757	24650	39574	63290
250	4148	7433	11934	19085	880	14072	25215	40480	64739
260	4306	7715	12387	19810	900	14387	25779	41387	66188
270	4464	7998	12840	20534	920	14702	26343	42293	67638
275	4542	8139	13066	20897	940	15017	26908	43199	69087
280	4621	8280	13293	21259	960	15332	27472	44105	70536
285	4700	8421	13520	21621	980	15647	28037	45012	71986
290	4779	8562	13746	21984	1000	15962	28601	45918	73435
300	4936	8844	14199	22708	1020	16277	29166	46824	74884
310	5094	9127	14652	23433	1040	16592	29730	47730	76334
320	5251	9409	15105	24158	1060	16907	30295	48637	77783
330	5409	9691	15559	24882	1080	17223	30859	49543	79232
340	5566	9973	16012	25607	1100	17538	31424	50449	80682
350	5724	10256	16465	26332	1120	17853	31988	51355	82131
360	5881	10538	16918	27056	1140	18168	32553	52262	83580
370	6039	10820	17371	27781	1160	18483	33117	53168	85030
380	6196	11102	17824	28506	1180	18798	33682	54074	86479
390	6354	11385	18277	29230	1200	19113	34246	54980	87928
400	6511	11667	18730	29955	1220	19428	34811	55886	89378
410	6669	11949	19184	30680	1230	19585	35093	56340	90102
420	6826	12231	19637	31404	1235	19664	35234	56566	90465
430	6984	12514	20090	32129					



P.O. Box 1382 • Kilgore, Texas 75663-1382
 903-984-8574 • Fax 903-984-6307
 www.hydroseal.com

