

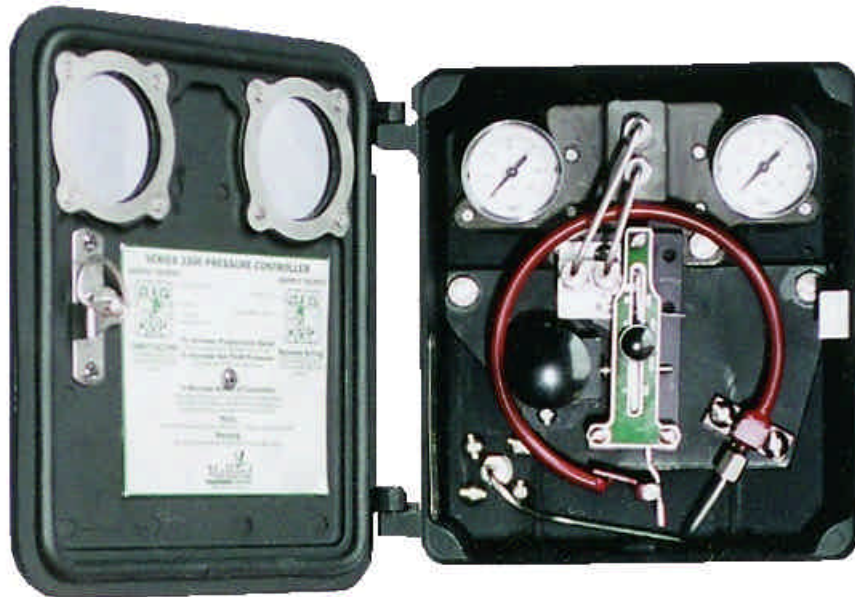
The Model 3300 pneumatic pressure controller combines a simple principle of operation and few moving parts with a rugged construction to make an ideal pressure controller for demanding applications.

## Features

- **Rugged Design** - Aluminum Case and Cover can withstand impacts that would fracture the plastic cases of our competitors.
- **Field Reversible** - Simply move the orifice block and fulcrum pin to the other side of the flapper

assembly and rotate both 180° (easy-to-follow instructions located on the inside cover).

- **Simple Adjustments** - Pressure setpoint changes are made with a single knob adjustment. Proportional band adjustments are made by moving the fulcrum pin along a graduated scale.
- **Flexible Mounting Options** - Can be mounted on actuator yoke, diaphragm housing, panel, or 2-inch pipestand.



**Specifications:****Input Signal (Bourdon Tube Ranges)**

0 to 50 psig (0 to 3.4 bar)  
 0 to 100 psig (0 to 6.9 bar)  
 0 to 250 psig (0 to 17.2 bar)  
 0 to 500 psig (0 to 34.5 bar)  
 0 to 1000 psig (0 to 68.9 bar)  
 0 to 1500 psig (0 to 103 bar)  
 0 to 2500 psig (0 to 172 bar)  
 0 to 5000 psig (0 to 345 bar)

**Setpoint Adjustment**

Internal manual adjusting knob

**Controller Mode**

Proportional (2 to 20% proportional band)

**Controller Action**

Direct or Reverse (see Figure 1)

**Controller Output Signal**

3 to 15 psig (0.2 to 1.0 bar)  
 6 to 30 psig (0.4 to 2.0 bar)

**Supply Pressure Requirements**

Type: Clean, dry air or non-corrosive gas<sup>1</sup>

Normal Operating Supply Pressure<sup>2</sup>:

3 to 15 psig output: 20 psig (1.4 bar)  
 6 to 30 psig output: 35 psig (2.4 bar)

Maximum Allowable Supply Pressure:

3 to 15 psig output: 40 psig (2.8 bar)  
 6 to 30 psig output: 40 psig (2.8 bar)

**Air (Gas) Consumption**

20 psig supply: 35 scfh  
 35 psig supply: 50 scfh

**Maximum Working Pressure**

Same as Bourdon Tube rating

**Normal Operating Temperature Range**

-40 to 150°F (-40 to 66°C)

**Construction Materials**

Case and Cover:	Die Cast Aluminum
Bourdon Tube:	Stainless Steel
Pressure Block:	316 SST
Supply and Output Tubing:	316 SST
Input Pressure Tubing:	316 SST
Nozzle:	316 SST
Orifice Block:	Aluminum
Mounting Bracket:	Cadmium-plated steel 316 SST (optional)

**Connections**

1/4" FNPT

**Mounting**

Actuator Yoke  
 Actuator Housing  
 Panel  
 2-inch pipestand

**Options**

Compliance with NACE MR-01-75 specifications for H<sub>2</sub>S service

1. If the supply gas is flammable or noxious, the controller must be located in a well-ventilated, non-hazardous area.  
 2. If this pressure is exceeded, control performance may be impaired.

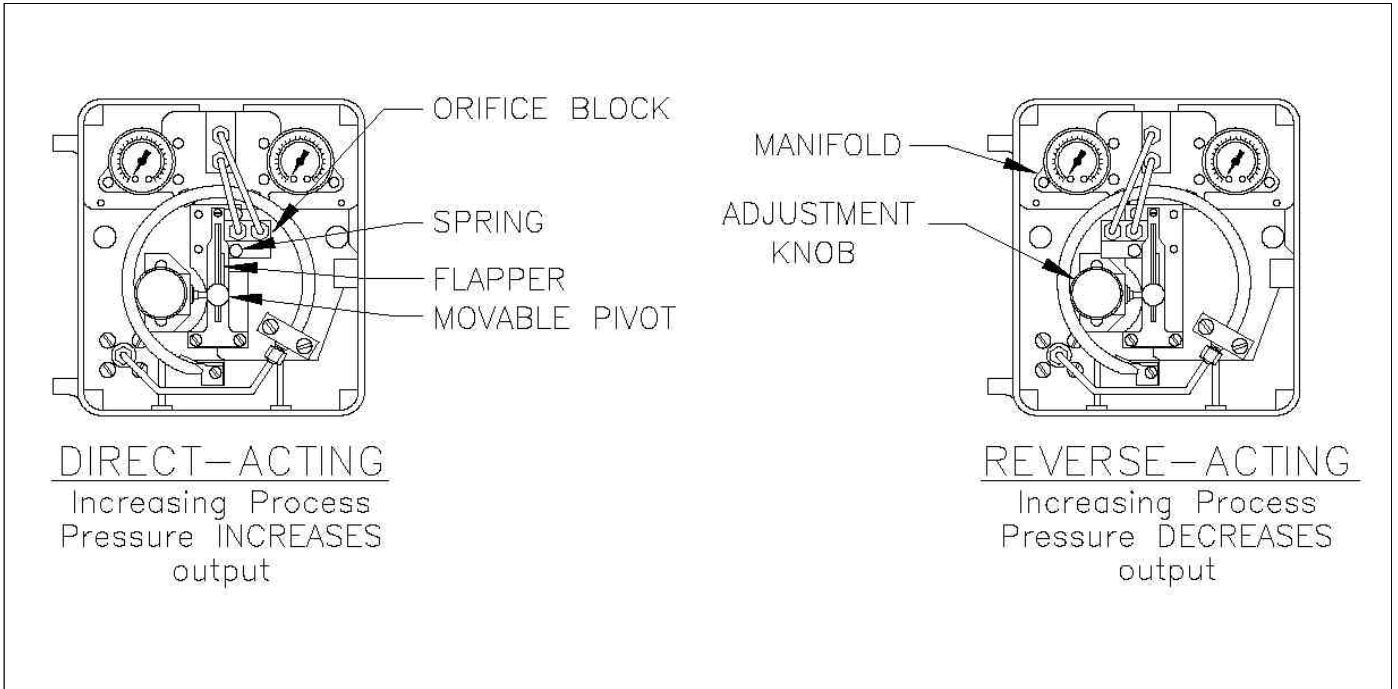
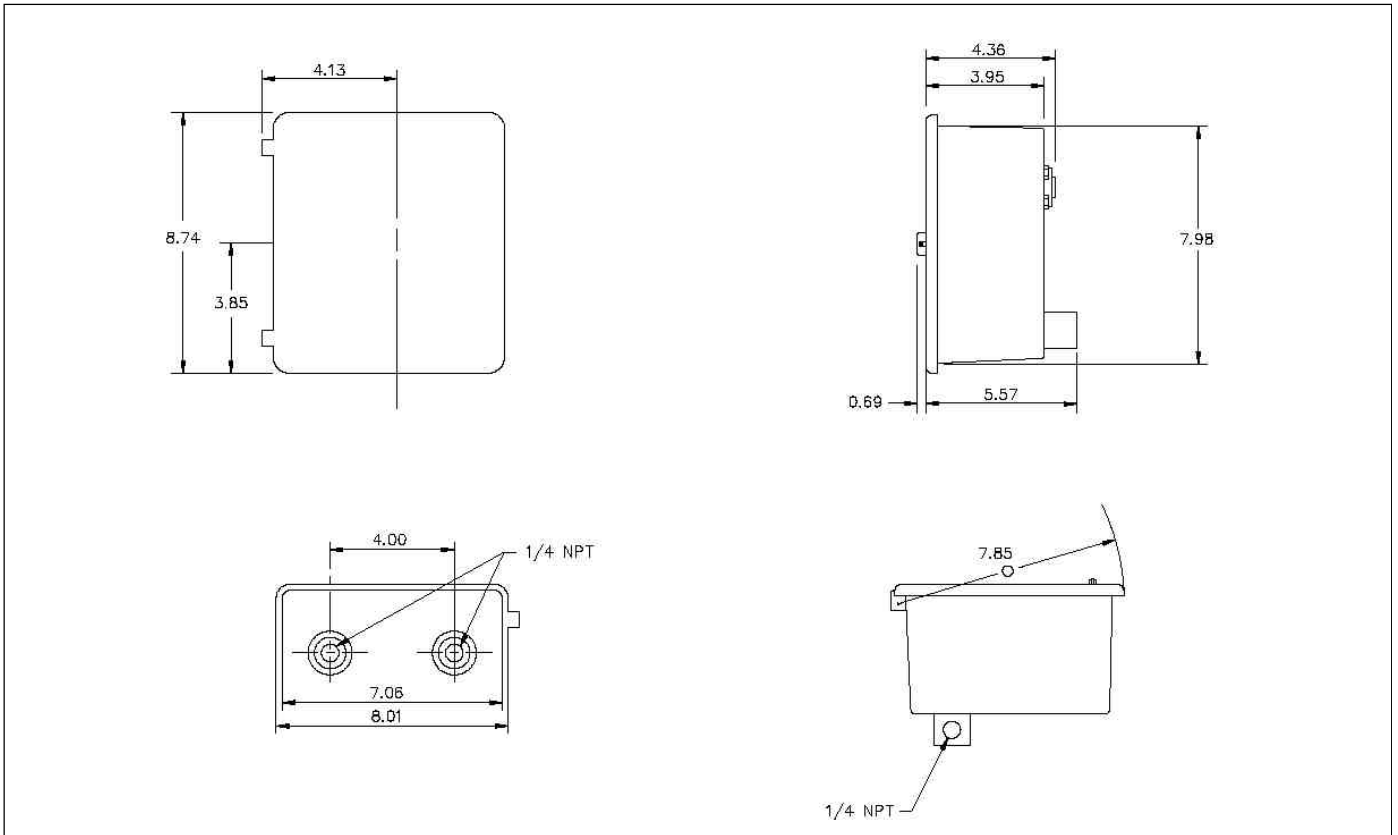


Figure 1. Field-Reversible Controller Action

**Controller Dimensions:**



### Model Number Information

Sample Model Number: 3300 - 010 R 1 - 0

INPUT SIGNAL RANGE	CODE
0 to 50 psig (0 to 3.4 bar)	005
0 to 100 psig (0 to 6.9 bar)	010
0 to 250 psig (0 to 17.2 bar)	025
0 to 500 psig (0 to 34.5 bar)	050
0 to 1000 psig (0 to 68.9 bar)	100
0 to 1500 psig (0 to 103 bar)	150
0 to 2500 psig (0 to 172 bar)	250
0 to 5000 psig (0 to 345 bar)	500

CONTROLLER ACTION	CODE
Direct (Increase output on increasing pressure)	D
Reverse (Decrease output on increasing pressure)	R

CONTROLLER OUTPUT	CODE
3-15 psig (0.2 to 1.0 bar)	1
6-30 psig (0.4 to 2.0 bar)	2

OPTIONS	CODE
None	-
NACE Compliant for Sour Gas Service	N

MOUNTING	CODE
None	-
Actuator Yoke	1
Actuator Housing	2
Panel	3
2-inch Pipestand	4

While this information is presented in good faith and believed to be accurate, Mallard Control Company does not guarantee results based upon such information. Mallard Control Company reserves the right to change the design or specifications of these products without notice.

### Mallard Control Company, Inc.

4970 Washington Boulevard  
 Beaumont, Texas, USA 77707  
 409 842-5392 Phone  
 409 842-8165 FAX  
 www.MallardControl.com